



REPUBLIKA SLOVENIJA

MINISTRSTVO ZA OKOLJE IN PROSTOR

www.mop.gov.si, e: gp.mop@gov.si  
Dunajska cesta 48, 1000 Ljubljana  
t: 01 478 74 00, f: 01 478 74 22



# Implementing the Spatiatial Development Policies Slovenian experience

Margarita Jančič, Ministry of the Environment and Spatial Planning,





# What about ?

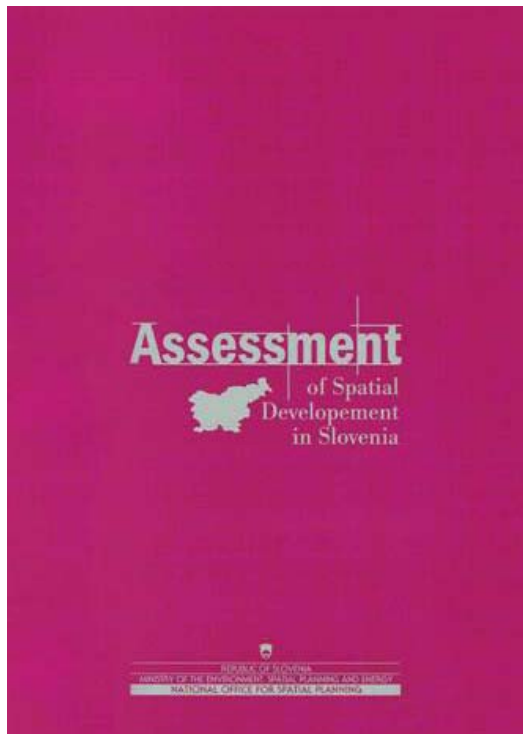
## Slovenian documents on the national level

1. tool for comprehensive spatial development
2. approach
3. cooperation





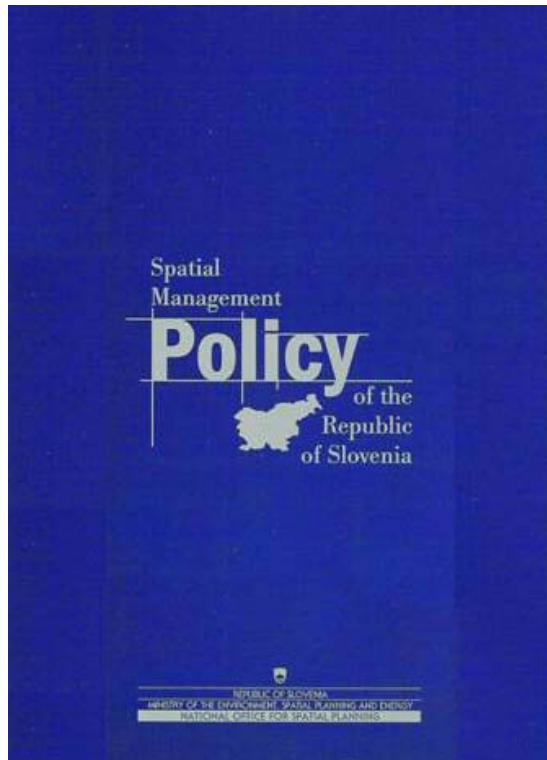
# Documents



## “Assessment of Spatial Development in Slovenia”

trends, recommendations





# “Spatial Development (Management) Policy”

policy aims,  
principles, evaluation criteria  
for development initiatives





# **The new paradigm in spatial planning**

subsidiarity  
flexibility  
integration

## **Planning as a continuous process**

public participation  
vertical and horizontal cooperation





# Territory

**Not the “tabula rasa”**

**Part of the European territory**

**Diversity comparative advantage**

**Endogenous resources -capital**

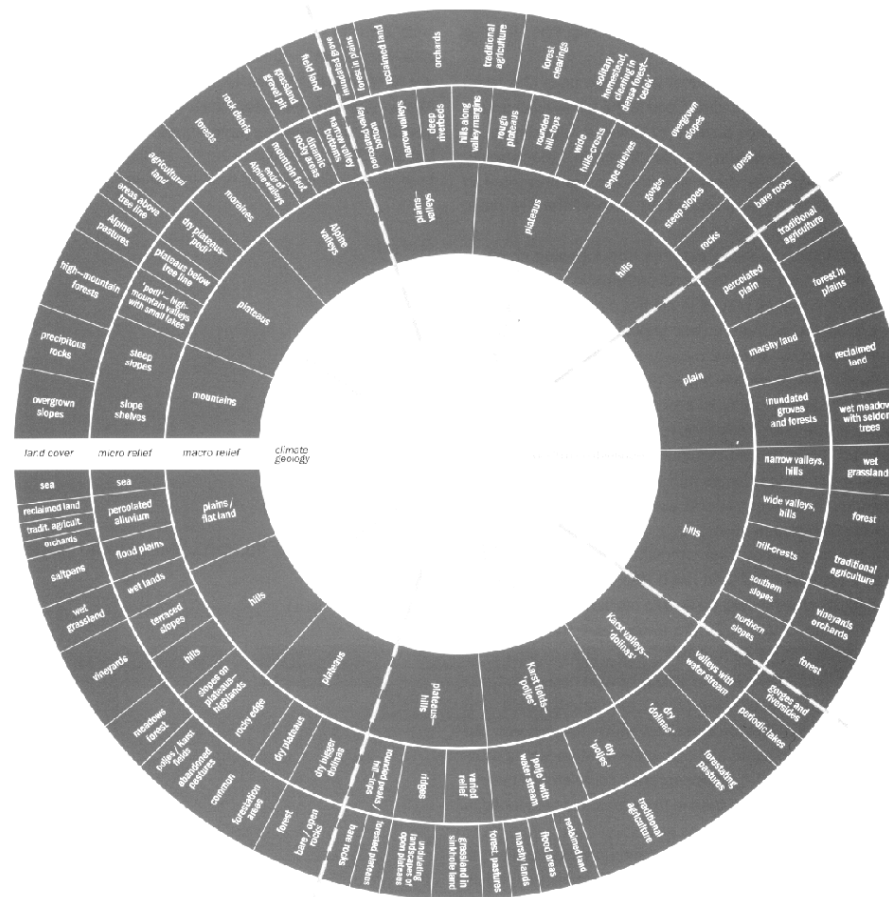




www.mop.gov.si, e: gp.mop@gov.si  
Dunajska cesta 48, 1000 Ljubljana  
t: 01 478 74 00, f: 01 478 74 22



# Landscape classifications

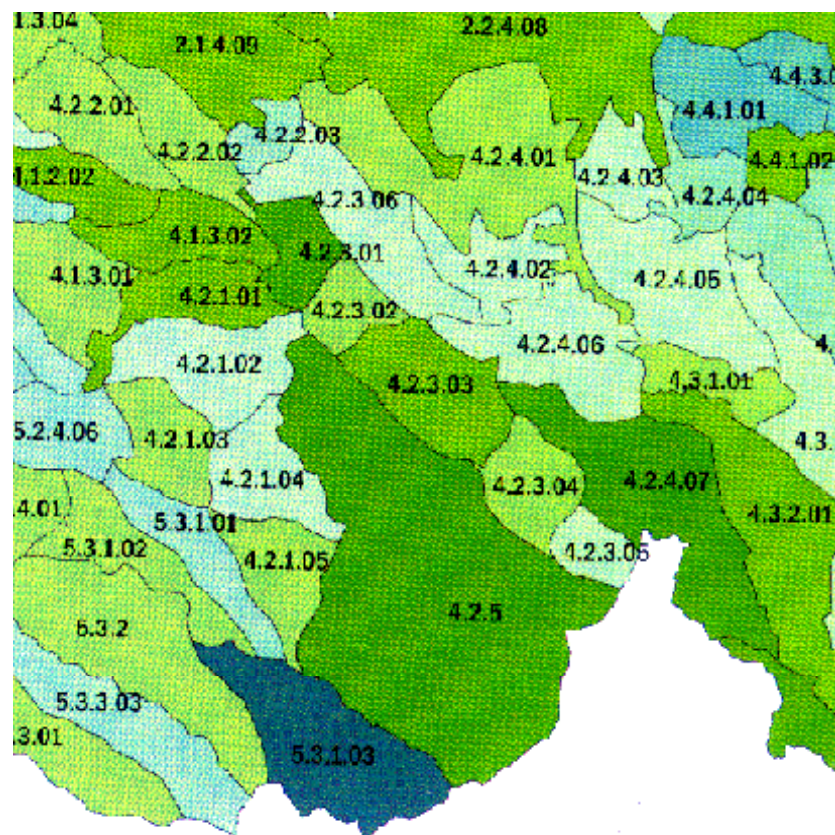




REPUBLIKA SLOVENIJA

MINISTRSTVO ZA OKOLJE IN PROSTOR

www.mop.gov.si, e: gp.mop@gov.si  
Dunajska cesta 48, 1000 Ljubljana  
t: 01 478 74 00, f: 01 478 74 22



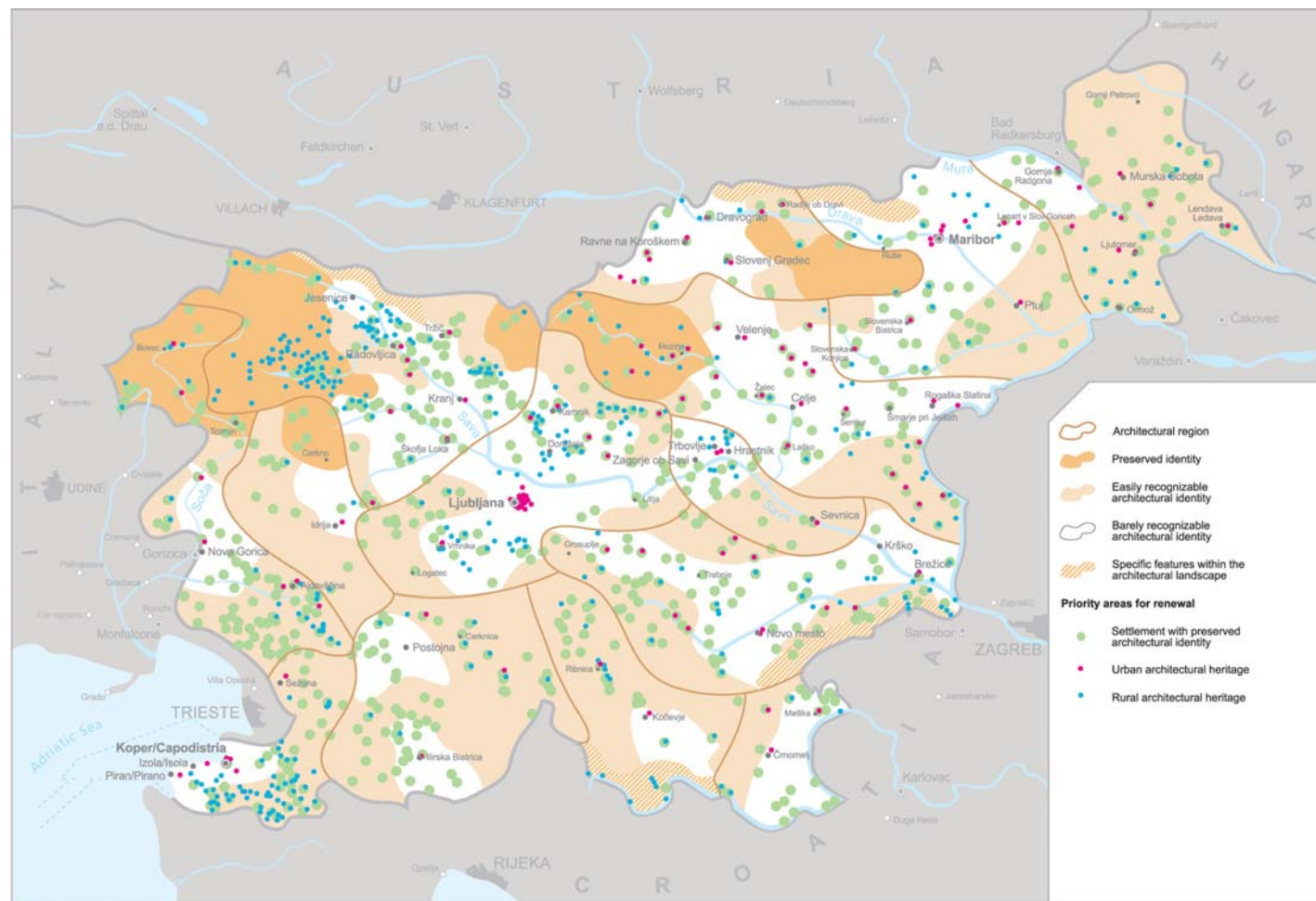




REPUBLIKA SLOVENIJA

## MINISTRSTVO ZA OKOLJE IN PROSTOR

www.mop.gov.si, e: gp.mop@gov.si  
Dunajska cesta 48, 1000 Ljubljana  
t: 01 478 74 00, f: 01 478 74 22



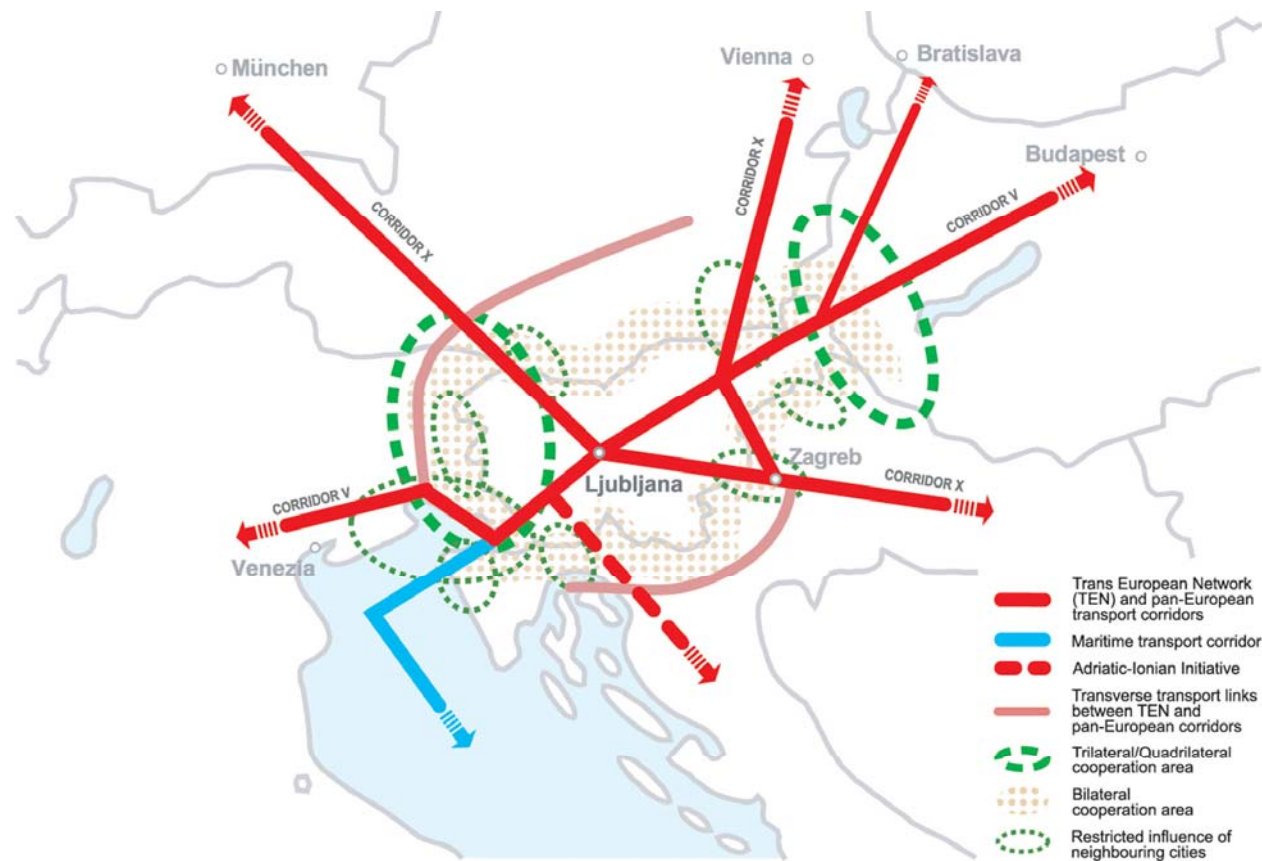
The sea border between the Republic of Slovenia (RS) and the Republic of Croatia (RC) assumed from the Treaty on the Common State Border between the RS and the RC (Annex 1) approved by both governments on 19 July 2001, and initiated by the heads of negotiating groups on 20 July 2001.  
Source: Expert research for the SDSS  
Cartographic: MOPE - UPP, MOPE - GURS, GZ, 2003  
Cartographic processing: MOPE, July 2004

Publication Map No 2 Chapter III.1.4  
Settlement Development

**Architectural Identity**

**Spatial Development Strategy  
of the Republic of Slovenia**







# Spatial Development Strategy of Slovenia

**comprehensive basic strategic spatial  
development document**

**implements the concept of balanced and  
sustainable development**





# Spatial Development Strategy

## Imposes conditions for:

- balanced economic, social and cultural development
- ensuring development which will also enable protection/development of the environment, heritage, nature and
- quality of living

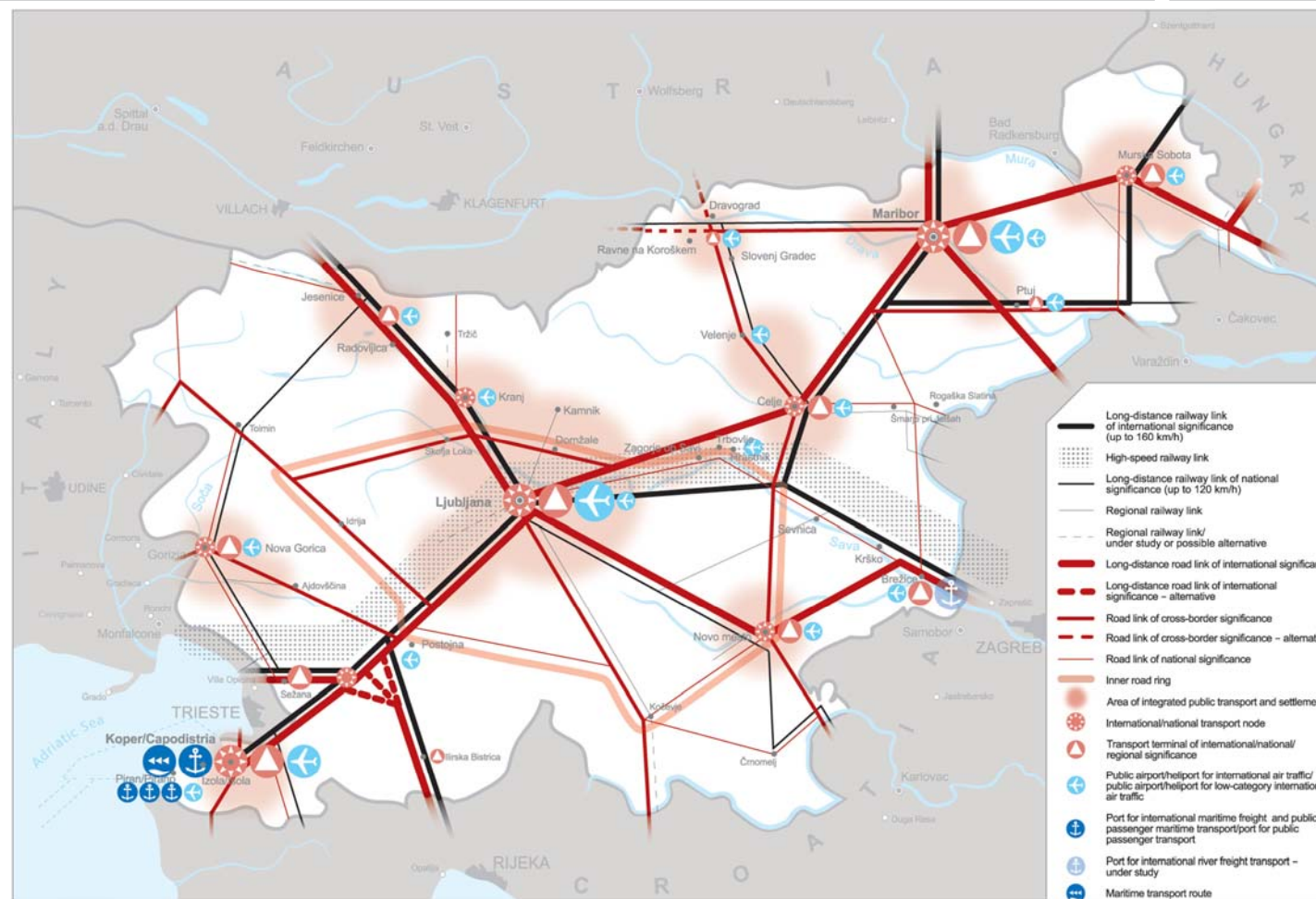




REPUBLIKA SLOVENIJA

## MINISTRSTVO ZA OKOLJE IN PROSTOR

www.mop.gov.si, e: gp.mop@gov.si  
Dunajska cesta 48, 1000 Ljubljana  
t: 01 478 74 00, f: 01 478 74 22



The sea border between the Republic of Slovenia (RS) and the Republic of Croatia (RC) assumed from the Treaty on the Common State Border between the RS and the RC (Annex 1) approved by both governments on 19 July 2001, and initiated by the heads of negotiating groups on 20 July 2001.

Source: Expert research for the SDSS

Cartographic: MOPE - UPP, MOPE - GURS, GZ, 2003  
Cartographic processing: MOPE, July 2004

Publication Map No 3 Chapter III.2.1

### Public Infrastructure Development Guidelines for Development of the Transport System

Spatial Development Strategy  
of the Republic of Slovenia

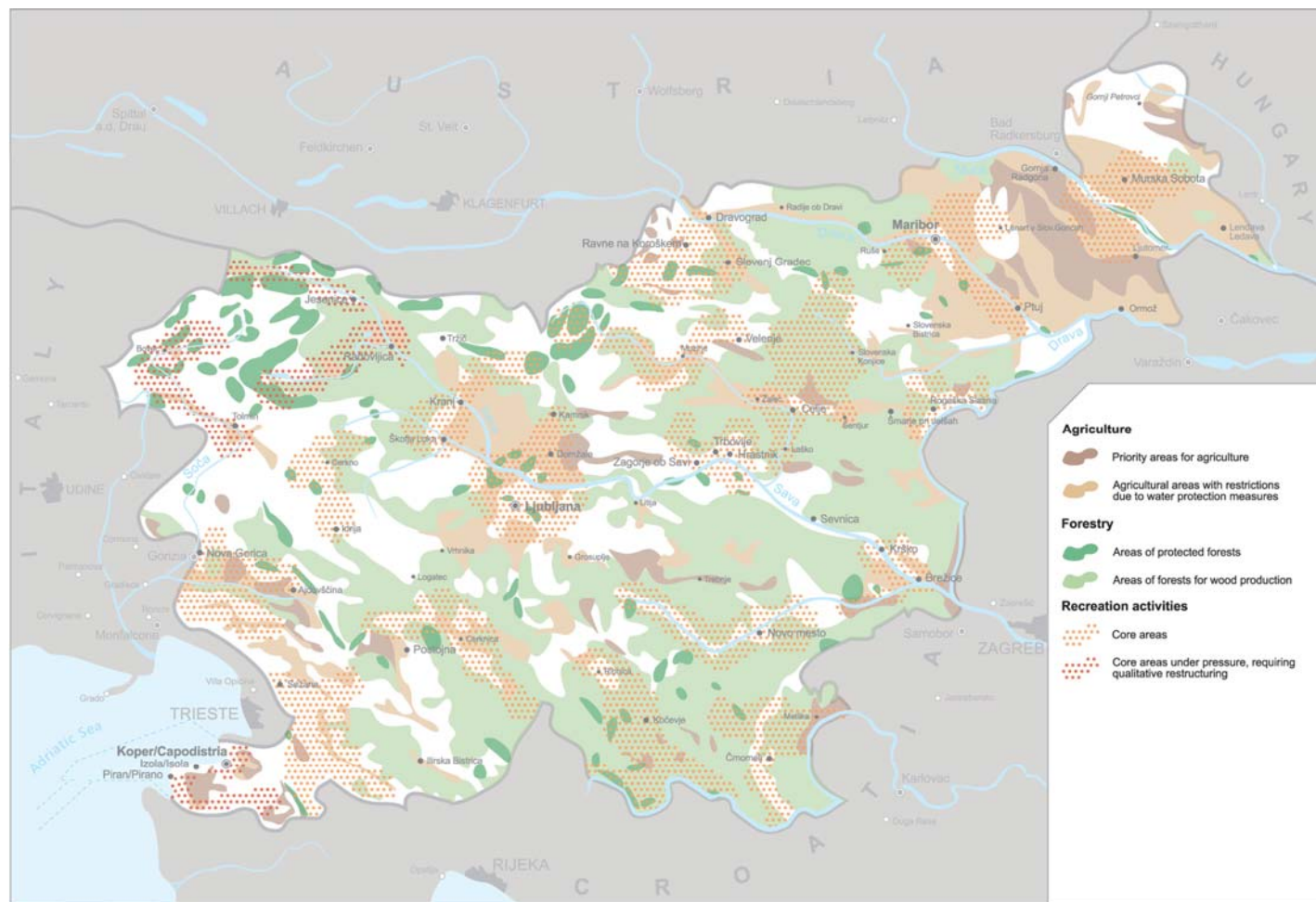




REPUBLIKA SLOVENIJA

## MINISTRSTVO ZA OKOLJE IN PROSTOR

www.mop.gov.si, e: gp.mop@gov.si  
Dunajska cesta 48, 1000 Ljubljana  
t: 01 478 74 00, f: 01 478 74 22



The sea border between the Republic of Slovenia (RS) and the Republic of Croatia (RC) assumed from the Treaty on the Common State Border between the RS and the RC (Annex 1) approved by both governments on 19 July 2001, and initiated by the heads of negotiating groups on 20 July 2001.

Source: Expert research for the SDSS

Cartographic: MOPE - UPP, MOPE - GURS, GZ, 2003  
Cartographic processing: MOPE, July 2004

Publication Map No 7 Chapter III.3.3  
Landscape Development

Use of Natural Resources

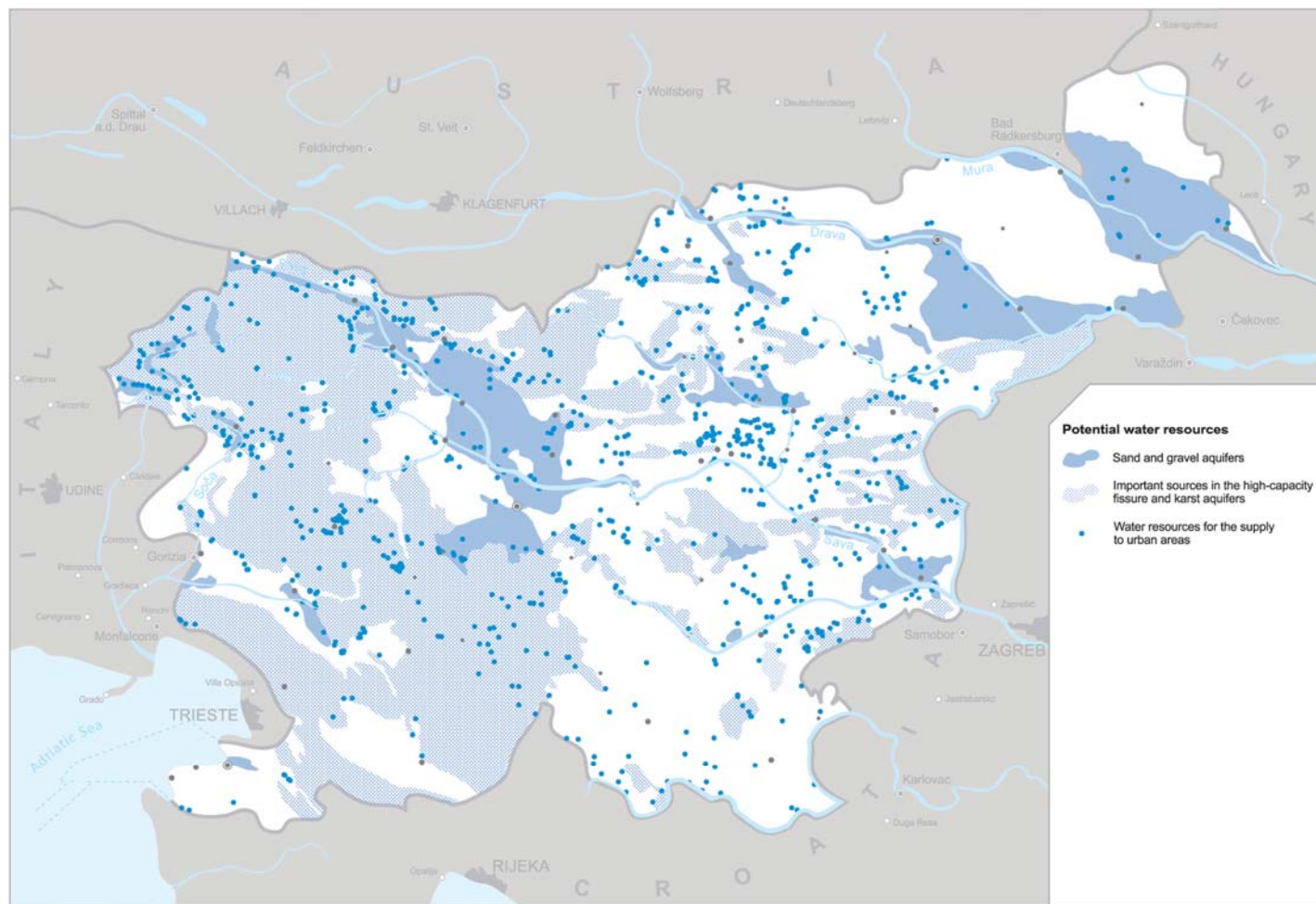
Spatial Development Strategy  
of the Republic of Slovenia



REPUBLIKA SLOVENIJA

## MINISTRSTVO ZA OKOLJE IN PROSTOR

www.mop.gov.si, e: gp.mop@gov.si  
Dunajska cesta 48, 1000 Ljubljana  
t: 01 478 74 00, f: 01 478 74 22



The sea border between the Republic of Slovenia (RS) and the Republic of Croatia (RC) assumed from the Treaty on the Common State Border between the RS and the RC (Annex 1) approved by both governments on 19 July 2001, and initialled by the heads of negotiating groups on 20 July 2001

Source: Expert research for the SDSS

Cartographic: MOPE - UPP, MOPE - GURS, GZ, 2003  
Cartographic processing: MOPE, July 2004

Publication Map No 8 Chapter III.3.3.3  
Landscape Development

### Drinking Water Supply Potentials

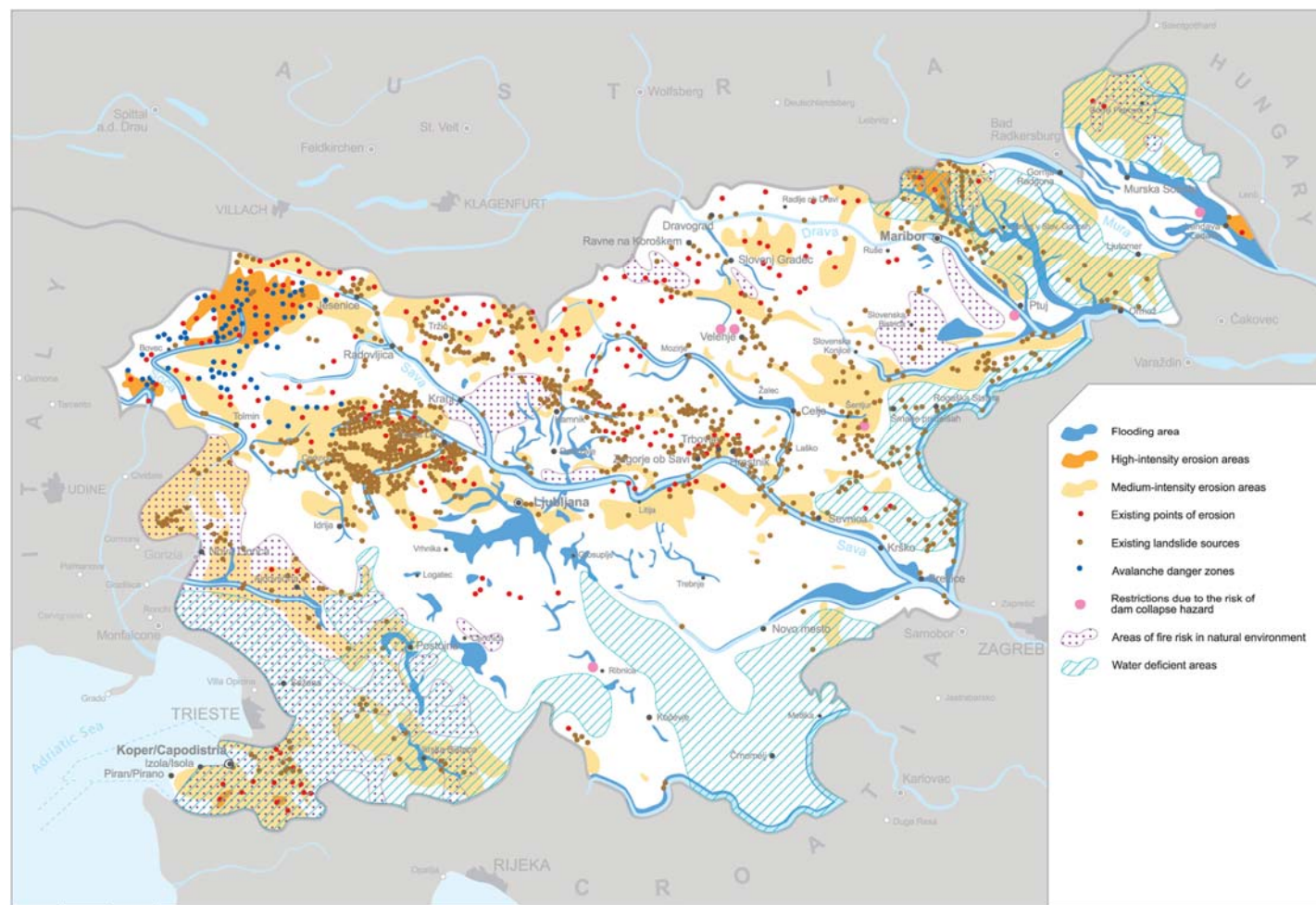
Spatial Development Strategy  
of the Republic of Slovenia



REPUBLIKA SLOVENIJA

## MINISTRSTVO ZA OKOLJE IN PROSTOR

www.mop.gov.si, e: gp.mop@gov.si  
Dunajska cesta 48, 1000 Ljubljana  
t: 01 478 74 00, f: 01 478 74 22



The sea border between the Republic of Slovenia (RS) and the Republic of Croatia (RC) assumed from the Treaty on the Common State Border between the RS and the RC (Annex 1) approved by both governments on 19 July 2001, and initiated by the heads of negotiating groups on 20 July 2001

Source: Expert research for the SDSS

Cartographic: MOPE - UPP, MOPE - GURS, GZ, 2003  
Cartographic processing: MOPE, July 2004

Publication Map No 9 Chapter III.3.3.8  
Landscape Development

### Spatial Restrictions for Development

Spatial Development Strategy  
of the Republic of Slovenia



28.10.2008

16





# Spatial Development Strategy of Slovenia

basic premises and objectives  
concepts, priorities, guidelines  
development of spatial systems  
guidelines for regional and local level  
implementing measures





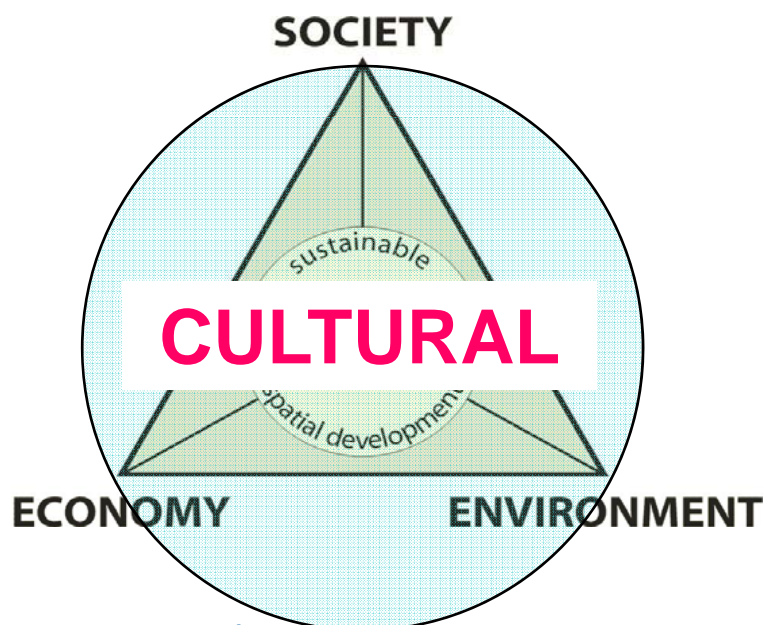
**4 dimensions + not more that we “really need”**



**ABSTAINABLE  
COMPREHENSIVE**



**territorial sustainability**





REPUBLIKA SLOVENIJA

MINISTRSTVO ZA OKOLJE IN PROSTOR

www.mop.gov.si, e: gp.mop@gov.si  
Dunajska cesta 48, 1000 Ljubljana  
t: 01 478 74 00, f: 01 478 74 22

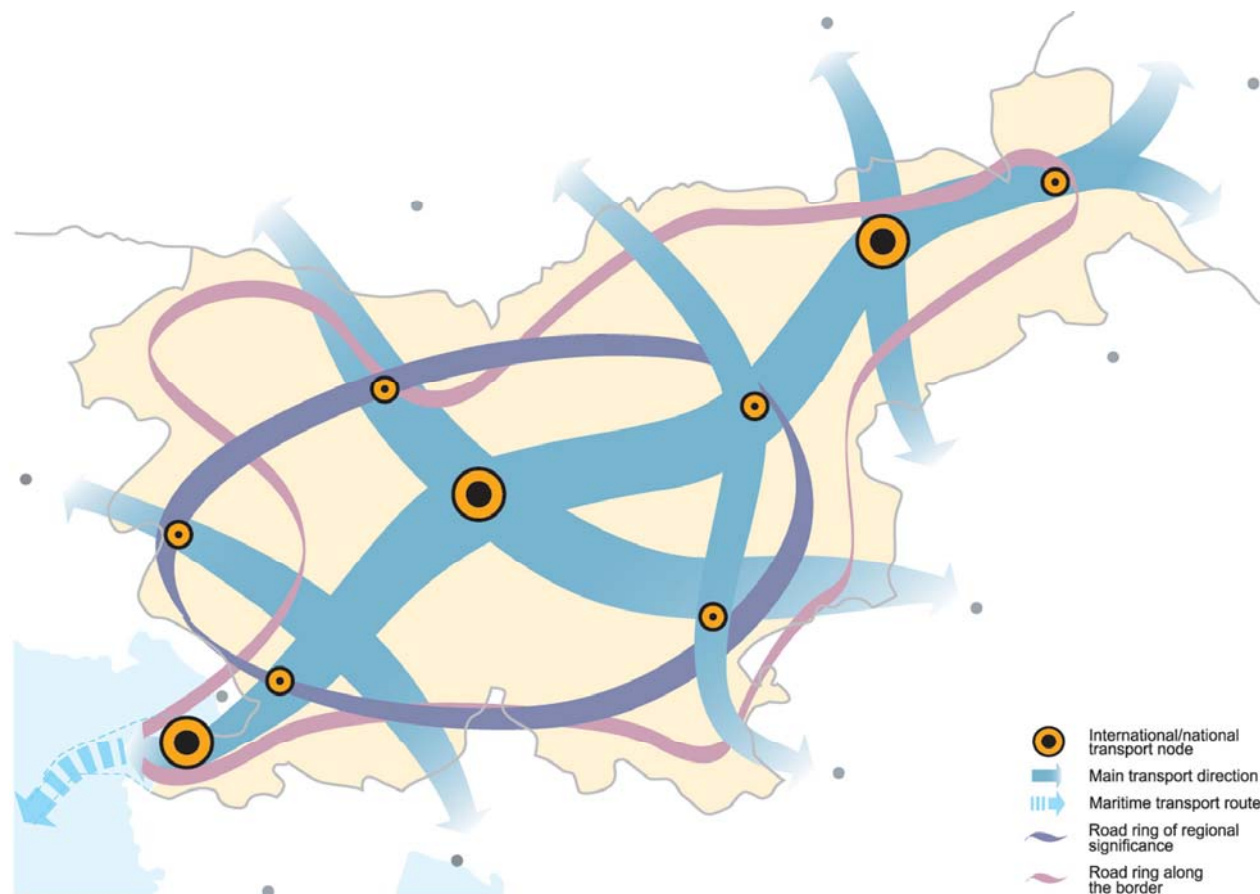


The sea border between the Republic of Slovenia (RS) and the Republic of Croatia (RC) assumed from the Treaty on the Common State Border between the RS and the RC (Annex 1) approved by both governments on 19 July 2001, and initiated by the heads of negotiating groups on 20 July 2001

Map No 3

SETTLEMENT CONCEPT





The sea border between the Republic of Slovenia (RS) and the Republic of Croatia (RC) assumed from the Treaty on the Common State Border between the RS and the RC (Annex 1) approved by both governments on 19 July 2001, and initialised by the heads of negotiating groups on 20 July 2001

Map No 5

CONCEPT OF TRANSPORT LINKS

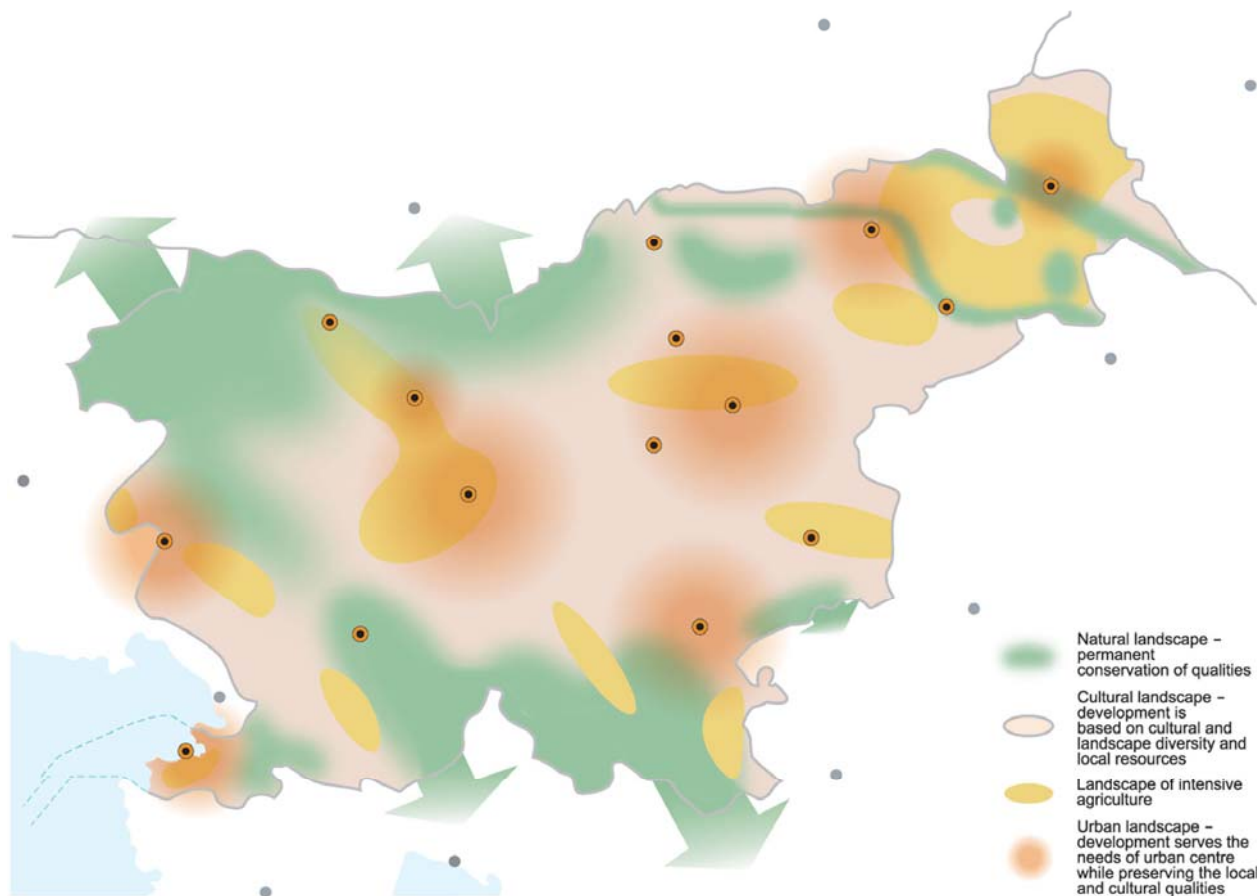




REPUBLIKA SLOVENIJA

MINISTRSTVO ZA OKOLJE IN PROSTOR

www.mop.gov.si, e: gp.mop@gov.si  
Dunajska cesta 48, 1000 Ljubljana  
t: 01 478 74 00, f: 01 478 74 22



- Natural landscape – permanent conservation of qualities
- Cultural landscape – development is based on cultural diversity and local resources
- Landscape of intensive agriculture
- Urban landscape – development serves the needs of urban centre while preserving the local and cultural qualities

The sea border between the Republic of Slovenia (RS) and the Republic of Croatia (RC) assumed from the Treaty on the Common State Border between the RS and the RC (Annex 1) approved by both governments on 19 July 2001, and initialised by the heads of negotiating groups on 20 July 2001

Map No 6

LANDSCAPE CONCEPT





REPUBLIKA SLOVENIJA

MINISTRSTVO ZA OKOLJE IN PROSTOR

[www.mop.gov.si](http://www.mop.gov.si), e: [gp.mop@gov.si](mailto:gp.mop@gov.si)  
Dunajska cesta 48, 1000 Ljubljana  
t: 01 478 74 00, f: 01 478 74 22



# Implementation



28.10.2008

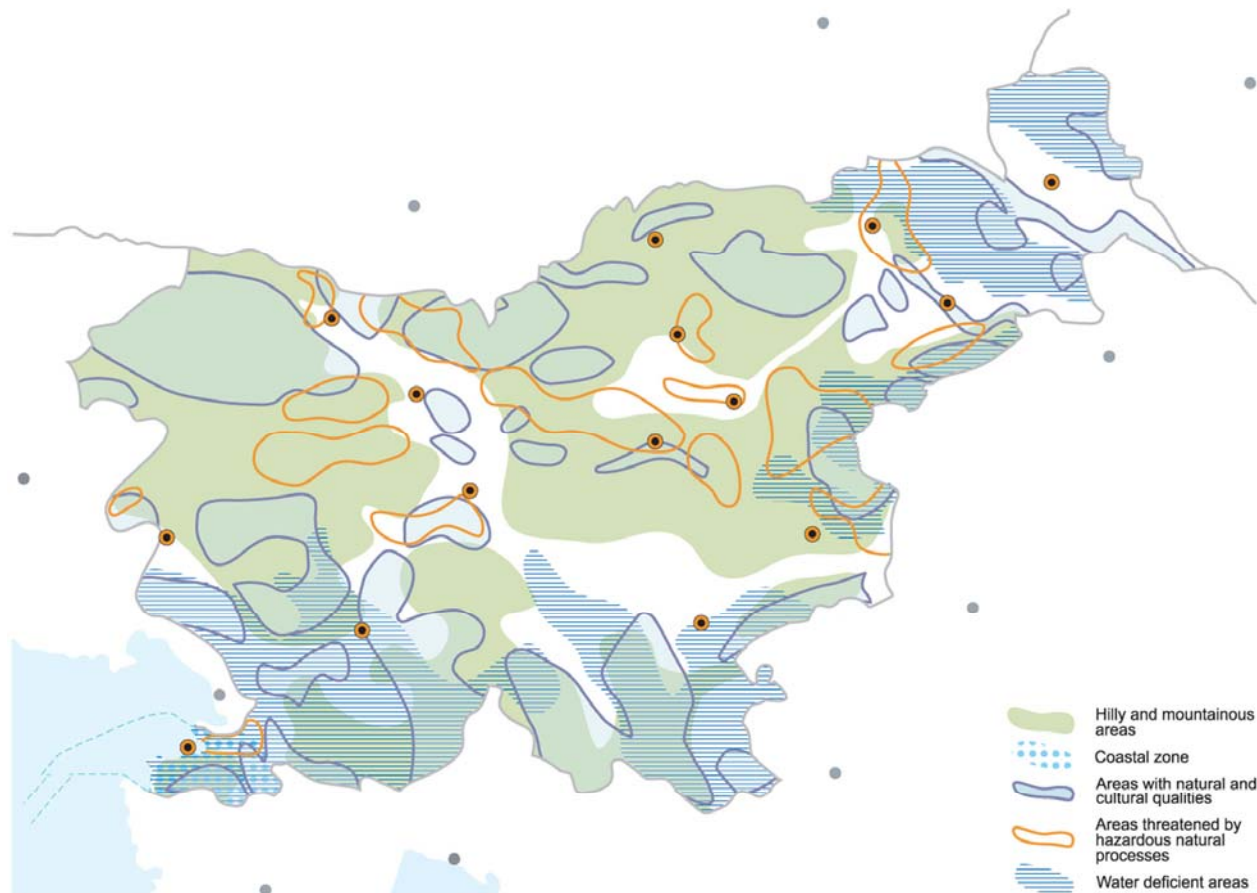
22



REPUBLIKA SLOVENIJA

MINISTRSTVO ZA OKOLJE IN PROSTOR

www.mop.gov.si, e: gp.mop@gov.si  
Dunajska cesta 48, 1000 Ljubljana  
t: 01 478 74 00, f: 01 478 74 22



The sea border between the Republic of Slovenia (RS) and the Republic of Croatia (RC) assumed from the Treaty on the Common State Border between the RS and the RC (Annex 1) approved by both governments on 19 July 2001, and initiated by the heads of negotiating groups on 20 July 2001

Map No 7

AREAS WITH PROBLEMS  
AND POTENTIALS



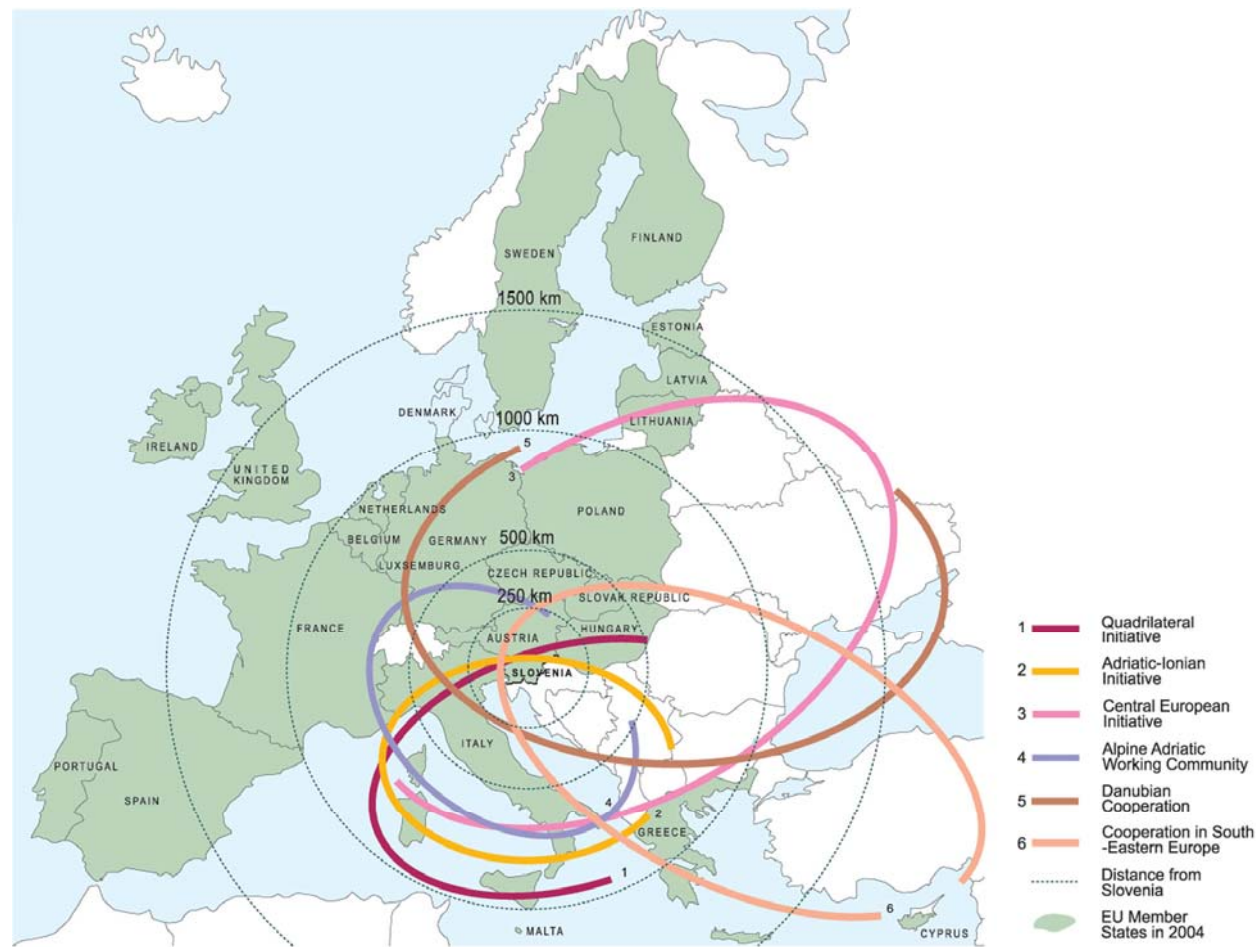




REPUBLIKA SLOVENIJA

MINISTRSTVO ZA OKOLJE IN PROSTOR

www.mop.gov.si, e: gp.mop@gov.si  
Dunajska cesta 48, 1000 Ljubljana  
t: 01 478 74 00, f: 01 478 74 22



Map No 1

SLOVENIA IN EUROPE AND INTERNATIONAL COOPERATION AREAS







REPUBLIKA SLOVENIJA

MINISTRSTVO ZA OKOLJE IN PROSTOR

[www.mop.gov.si](http://www.mop.gov.si), e: [gp.mop@gov.si](mailto:gp.mop@gov.si)  
Dunajska cesta 48, 1000 Ljubljana  
t: 01 478 74 00, f: 01 478 74 22



# Thank you for your attention !

